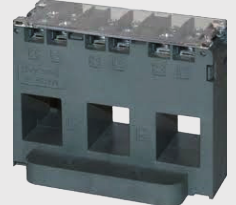
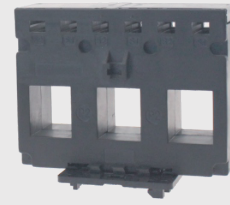


- C-series(柵欄端子)
- 電流大小配合孔徑尺寸(30*30mm)
- 輸入訊號: 300A~600A
- 輸出訊號: 5Aac, 適用業界所有儀錶接收
- 禁止開路使用,請務必先將輸出端負載裝置接好

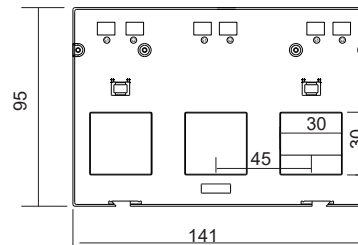


規格特性

- ◆ 頻率: 50~60 Hz
 - ◆ 額定電流: 300A to 600A loads
 - ◆ 額定輸出: 5A (AC)
 - ◆ 精度: Class 0.5 or 1 from 20% to 120% of rated current
 - ◆ 相位角: Less than 2 degrees at 50% of rated current
 - ◆ 絕緣電壓: 600 Vac
 - ◆ 最大初級電壓: 5000 Vac (Insulated Conductor)
 - ◆ 介電強度: 2.5KV/ 1mA/ 1min
 - ◆ 工作溫度: -15°C to 60°C
 - ◆ 工作濕度: <85%
 - ◆ 外殼材質: PC/UL94~V0
 - ◆ 孔蓋材質: PBT
 - ◆ 線圈材質: Permalloy
 - ◆ 內部結構: Epoxy
 - ◆ 線徑電流:
- | | |
|---------|-----------|
| 300/ 5A | (30*30mm) |
| 400/ 5A | (30*30mm) |
| 500/ 5A | (30*30mm) |
| 600/ 5A | (30*30mm) |

尺寸圖

- 電流: 300A, 400A, 500A, 600A



選用型號規格

DCSCT-30C - 代碼1 - 代碼2

碼1	輸入訊號	碼2	輸出訊號
300	300 Aac	5	5 Aac
400	400 Aac		
500	500 Aac		
600	600 Aac		